

Returns Quick Reference Card

Tellworks Employees

Login to the AIMSPlus App

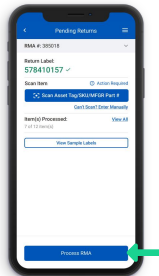
Visit aimsplusapp.tellworks.com and login. If you do not have an account, please Request an Account.

Need Help?

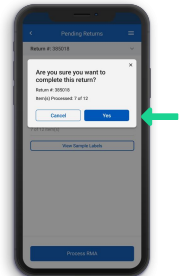
Visit <https://aimsplusapp.tellworks.com/#/help> for additional training and user guide information.

Processing a Short RMA

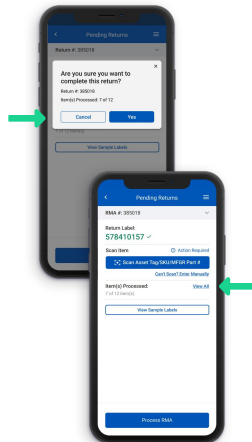
- 1 Process Short Return**
If there are no more items to scan, select the 'Process Short RMA' button to process the return.



- 2 Processing Confirmation**
After processing the RMA a popup will appear to confirm you would like to process a short RMA.



- 3 Viewing Missing Items**
If you want to view missing items, select cancel and then select the view all button



- 4 View All Items**
Select the 'View All' button to see a list of all the items on the RMA. Processed items will display with a green check and items that have NOT been processed will display in grey.

